

05/08/99

CONTRACT NO.: DA00302 WBS ELEMENT: 2017CPT.01.03.20082.1, ETC.

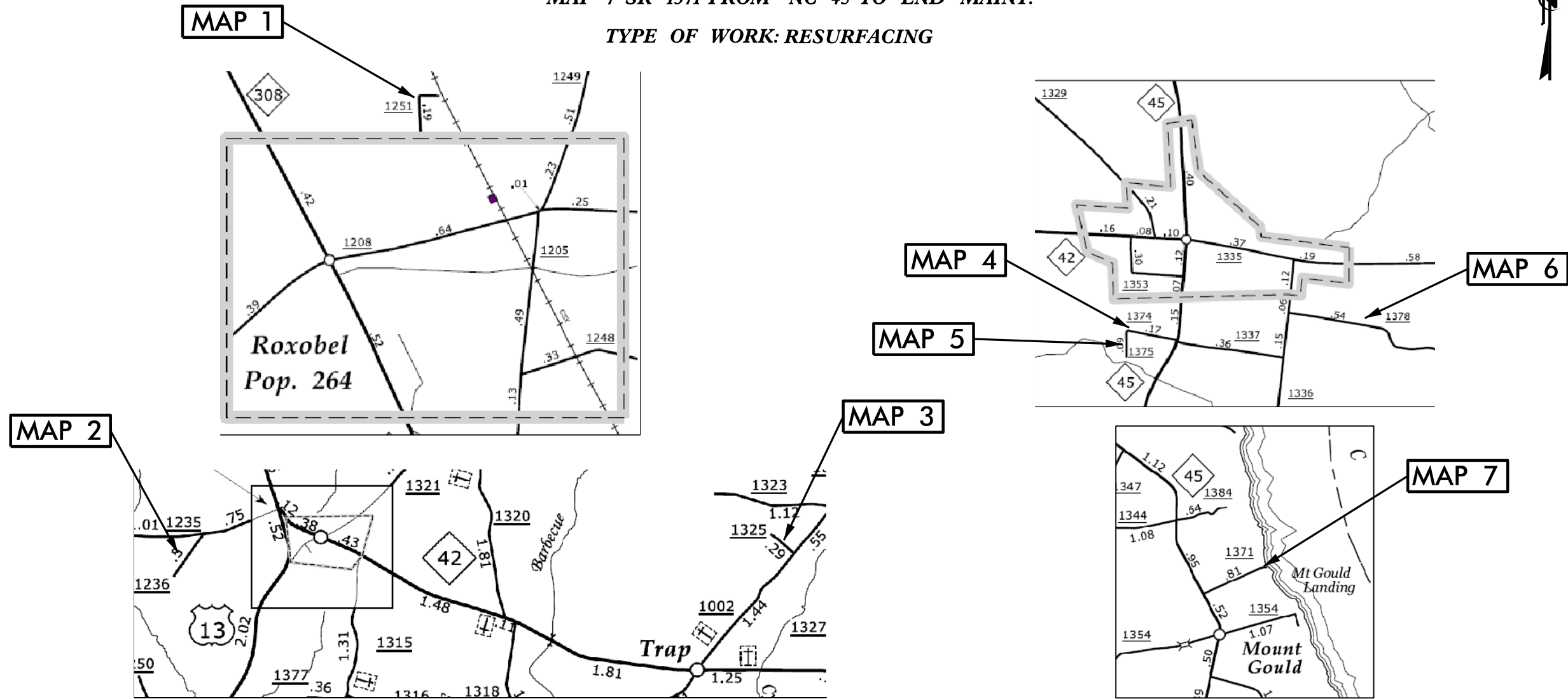
STATE OF NORTH CAROLINA
DIVISION OF HIGHWAYS

BERTIE COUNTY

| STATE | STATE PROJECT REFERENCE NO. | SHEET NO. | TOTAL SHEETS |
|-----------------------|-----------------------------|-------------|--------------|
| N.C. | 2017CPT.01.03.20082.1, ETC. | 1 | |
| STATE PROJ. NO. | F.A. PROJ. NO. | DESCRIPTION | |
| 2017CPT.01.03.20082.1 | | MAPS 1 - 7 | |
| | | | |
| | | | |

LOCATION: MAP 1 SR 1251 FROM ROXOBEL NCL TO END
 MAP 2 SR 1236 FROM SR 1235 TO END
 MAP 3 SR 1325 FROM SR 1002 TO END
 MAP 4 SR 1374 FROM NC 45 TO SR 1375
 MAP 5 SR 1375 FROM SR 1374 TO END
 MAP 6 SR 1378 FROM SR 1336 TO END MAINT.
 MAP 7 SR 1371 FROM NC 45 TO END MAINT.

TYPE OF WORK: RESURFACING



NTS

PROJECT LENGTH

| | |
|-----------------------------------|----------|
| LENGTH OF ROADWAY PROJECT MAP 1 = | 0.20 MI. |
| LENGTH OF ROADWAY PROJECT MAP 2 = | 0.47 MI. |
| LENGTH OF ROADWAY PROJECT MAP 3 = | 0.28 MI. |
| LENGTH OF ROADWAY PROJECT MAP 4 = | 0.17 MI. |
| LENGTH OF ROADWAY PROJECT MAP 5 = | 0.09 MI. |
| LENGTH OF ROADWAY PROJECT MAP 6 = | 0.54 MI. |
| LENGTH OF ROADWAY PROJECT MAP 7 = | 0.79 MI. |

Prepared in the Office of:
DIVISION OF HIGHWAYS
 113 Airport Dr., Edenton NC, 27932

2012 STANDARD SPECIFICATIONS

LETTING DATE: _____

W.B. HOBBS, P.E.
 DIVISION PROJECT MANAGER

C.E. SLACHTA
 DIVISION PROPOSALS ENGINEER

**DIVISION OF HIGHWAYS
 STATE OF NORTH CAROLINA**

05/08/99

CONTRACT NO.: DA00302 WBS ELEMENT: 2017CPT.01.03.20082.1, ETC.

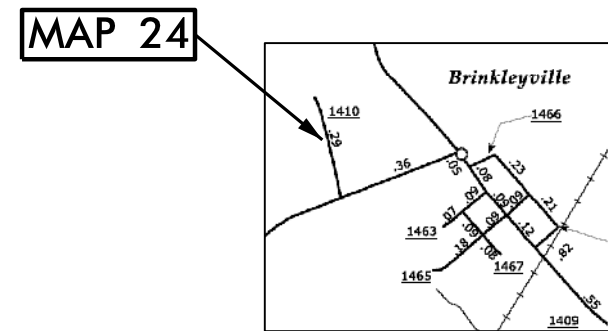
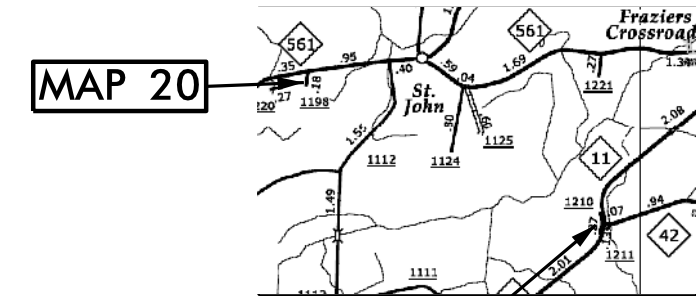
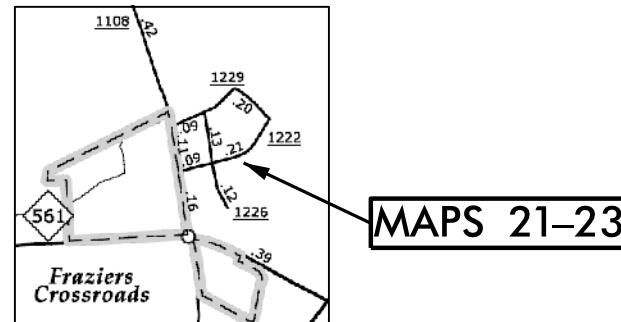
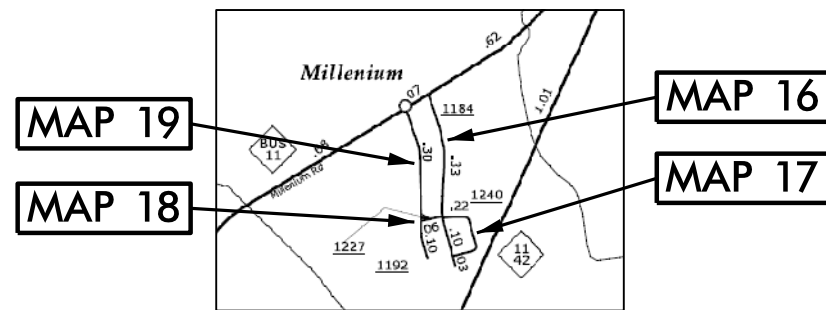
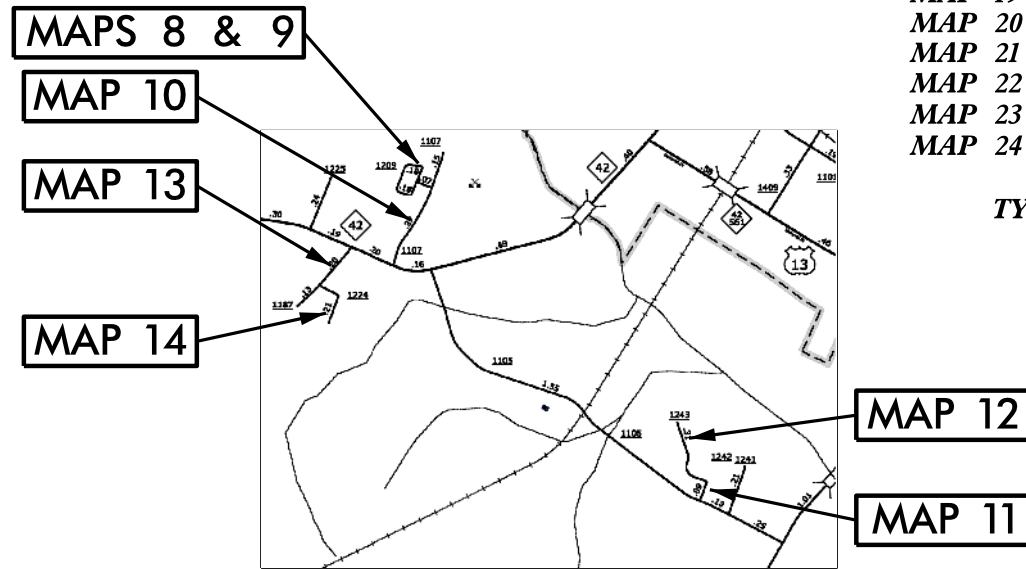
STATE OF NORTH CAROLINA
DIVISION OF HIGHWAYS

HERTFORD COUNTY

| | | | |
|-----------------------|-----------------------------|-------------|--------------|
| STATE | STATE PROJECT REFERENCE NO. | SHEET NO. | TOTAL SHEETS |
| N.C. | 2017CPT.01.03.20082.1, ETC. | 2 | |
| STATE PROJ. NO. | F.A. PROJ. NO. | DESCRIPTION | |
| 2017CPT.01.03.20462.1 | | MAP 8 - 24 | |
| | | | |
| | | | |

- LOCATION:**
- MAP 8 SR 1208 FROM SR 1107 TO SR 1209
 - MAP 9 SR 1209 FROM SR 1208 TO SR 1208
 - MAP 10 SR 1107 FROM NC 42 TO END MAINT.
 - MAP 11 SR 1242 FROM SR 1105 TO SR 1243
 - MAP 12 SR 1243 FROM SR 1242 TO CUL DE SAC
 - MAP 13 SR 1187 FROM NC 42 TO END
 - MAP 14 SR 1224 FROM SR 1187 TO END
 - MAP 15 SR 1210 FROM NC 11 TO END
 - MAP 16 SR 1184 FROM NC 11 BUS TO END
 - MAP 17 SR 1240 FROM SR 1184 TO SR 1184
 - MAP 18 SR 1227 FROM SR 1184 TO SR SR 1192
 - MAP 19 SR 1192 FROM NC 11 BUS TO CUL DE SAC
 - MAP 20 SR 1198 FROM NC 561 TO END
 - MAP 21 SR 1222 FROM SR 1108 TO SR 1229
 - MAP 22 SR 1229 FROM SR 1108 TO SR 1222
 - MAP 23 SR 1226 FROM SR 1229 TO END
 - MAP 24 SR 1410 FROM SR 1411 TO END

TYPE OF WORK: RESURFACING



| PROJECT LENGTH | | | |
|----------------------------------|---|------|-----|
| LENGTH OF ROADWAY PROJECT MAP 8 | = | 0.06 | MI. |
| LENGTH OF ROADWAY PROJECT MAP 9 | = | 0.36 | MI. |
| LENGTH OF ROADWAY PROJECT MAP 10 | = | 0.52 | MI. |
| LENGTH OF ROADWAY PROJECT MAP 11 | = | 0.08 | MI. |
| LENGTH OF ROADWAY PROJECT MAP 12 | = | 0.29 | MI. |
| LENGTH OF ROADWAY PROJECT MAP 13 | = | 0.32 | MI. |
| LENGTH OF ROADWAY PROJECT MAP 14 | = | 0.20 | MI. |
| LENGTH OF ROADWAY PROJECT MAP 15 | = | 0.29 | MI. |
| LENGTH OF ROADWAY PROJECT MAP 16 | = | 0.45 | MI. |
| LENGTH OF ROADWAY PROJECT MAP 17 | = | 0.21 | MI. |
| LENGTH OF ROADWAY PROJECT MAP 18 | = | 0.05 | MI. |
| LENGTH OF ROADWAY PROJECT MAP 19 | = | 0.39 | MI. |
| LENGTH OF ROADWAY PROJECT MAP 20 | = | 0.16 | MI. |
| LENGTH OF ROADWAY PROJECT MAP 21 | = | 0.28 | MI. |
| LENGTH OF ROADWAY PROJECT MAP 22 | = | 0.29 | MI. |
| LENGTH OF ROADWAY PROJECT MAP 23 | = | 0.24 | MI. |
| LENGTH OF ROADWAY PROJECT MAP 24 | = | 0.28 | MI. |

Prepared in the Office of:
DIVISION OF HIGHWAYS
113 Airport Dr., Edenton NC, 27932

2012 STANDARD SPECIFICATIONS

LETTING DATE: _____

W.B. HOBBS, P.E.
DIVISION PROJECT MANAGER

C.E. SLACHTA
DIVISION PROPOSALS ENGINEER

DIVISION OF HIGHWAYS
STATE OF NORTH CAROLINA

05/08/99

CONTRACT NO. : DA00302 WBS ELEMENT: 2017CPT.01.03.20082.1, ETC.

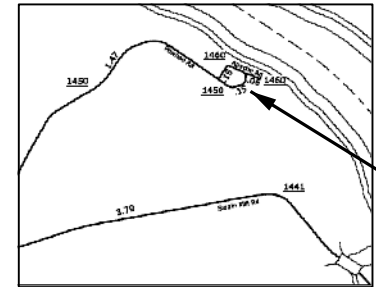
STATE OF NORTH CAROLINA
DIVISION OF HIGHWAYS

HERTFORD COUNTY

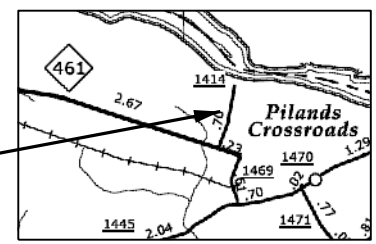
| | | | |
|-----------------------|-----------------------------|-------------|--------------|
| STATE | STATE PROJECT REFERENCE NO. | SHEET NO. | TOTAL SHEETS |
| N.C. | 2017CPT.01.03.20082.1, ETC. | 3 | |
| STATE PROJ. NO. | F.A. PROJ. NO. | DESCRIPTION | |
| 2017CPT.01.03.20462.1 | | MAP 25 - 39 | |
| | | | |
| | | | |

- LOCATION:**
- MAP 25 SR 1450 FROM SR 1460 TO SR 1460
 - MAP 26 SR 1460 FROM SR 1450 TO END
 - MAP 27 SR 1414 FROM NC 461 TO END MAINT.
 - MAP 28 SR 1402 FROM SR 1400 TO END MAINT.
 - MAP 29 SR 1401 FROM SR 1400 TO END
 - MAP 30 SR 1449 FROM SR 1401 TO NC 45
 - MAP 31 SR 1341 FROM SR 1303 TO END
 - MAP 32 SR 1170 FROM SR 1160 TO END MAINT.
 - MAP 33 SR 1235 FROM SR 1157 TO CUL DE SAC
 - MAP 34 SR 1234 FROM DEAD END TO CUL DE SAC
 - MAP 35 SR 1236 FROM SR 1157 TO END
 - MAP 36 SR 1237 FROM SR 1236 TO END
 - MAP 37 SR 1177 FROM US 158 BUS TO END
 - MAP 38 SR 1206 FROM SR 1177 TO SR 1207
 - MAP 39 SR 1207 FROM SR 1206 TO END

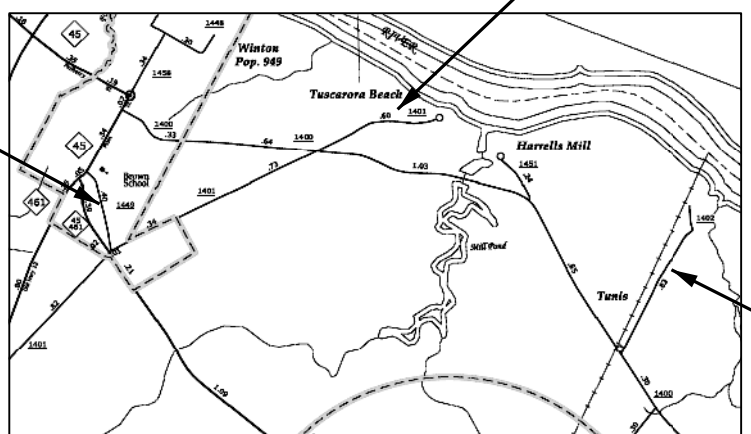
TYPE OF WORK: RESURFACING



MAPS 25 & 26

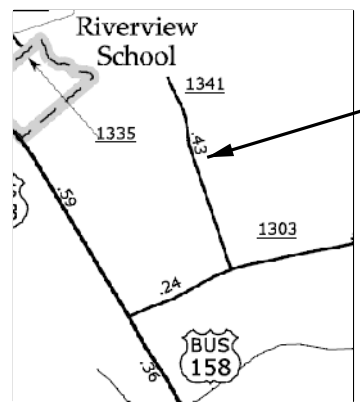


MAP 27



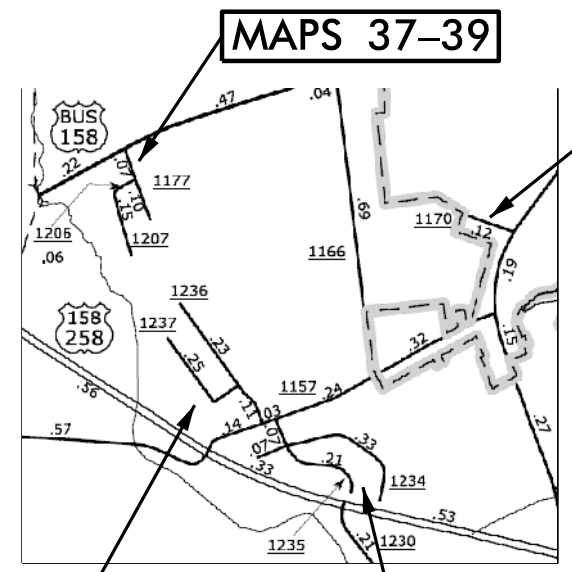
MAP 29

MAP 30



MAP 31

MAP 28



MAP 32

MAPS 35 & 36

MAPS 33 & 34

PROJECT LENGTH

| | | |
|----------------------------------|---|----------|
| LENGTH OF ROADWAY PROJECT MAP 25 | = | 0.16 MI. |
| LENGTH OF ROADWAY PROJECT MAP 26 | = | 0.20 MI. |
| LENGTH OF ROADWAY PROJECT MAP 27 | = | 0.68 MI. |
| LENGTH OF ROADWAY PROJECT MAP 28 | = | 0.80 MI. |
| LENGTH OF ROADWAY PROJECT MAP 29 | = | 0.59 MI. |
| LENGTH OF ROADWAY PROJECT MAP 30 | = | 0.37 MI. |
| LENGTH OF ROADWAY PROJECT MAP 31 | = | 0.50 MI. |
| LENGTH OF ROADWAY PROJECT MAP 32 | = | 0.11 MI. |

| | | |
|----------------------------------|---|----------|
| LENGTH OF ROADWAY PROJECT MAP 33 | = | 0.26 MI. |
| LENGTH OF ROADWAY PROJECT MAP 34 | = | 0.38 MI. |
| LENGTH OF ROADWAY PROJECT MAP 35 | = | 0.34 MI. |
| LENGTH OF ROADWAY PROJECT MAP 36 | = | 0.23 MI. |
| LENGTH OF ROADWAY PROJECT MAP 37 | = | 0.17 MI. |
| LENGTH OF ROADWAY PROJECT MAP 38 | = | 0.05 MI. |
| LENGTH OF ROADWAY PROJECT MAP 39 | = | 0.10 MI. |

Prepared in the Office of:
DIVISION OF HIGHWAYS
113 Airport Dr., Edenton NC, 27932

2012 STANDARD SPECIFICATIONS

LETTING DATE: _____

W.B. HOBBS, P.E.
DIVISION PROJECT MANAGER

C.E. SLACHTA
DIVISION PROPOSALS ENGINEER

DIVISION OF HIGHWAYS
STATE OF NORTH CAROLINA

05/08/99

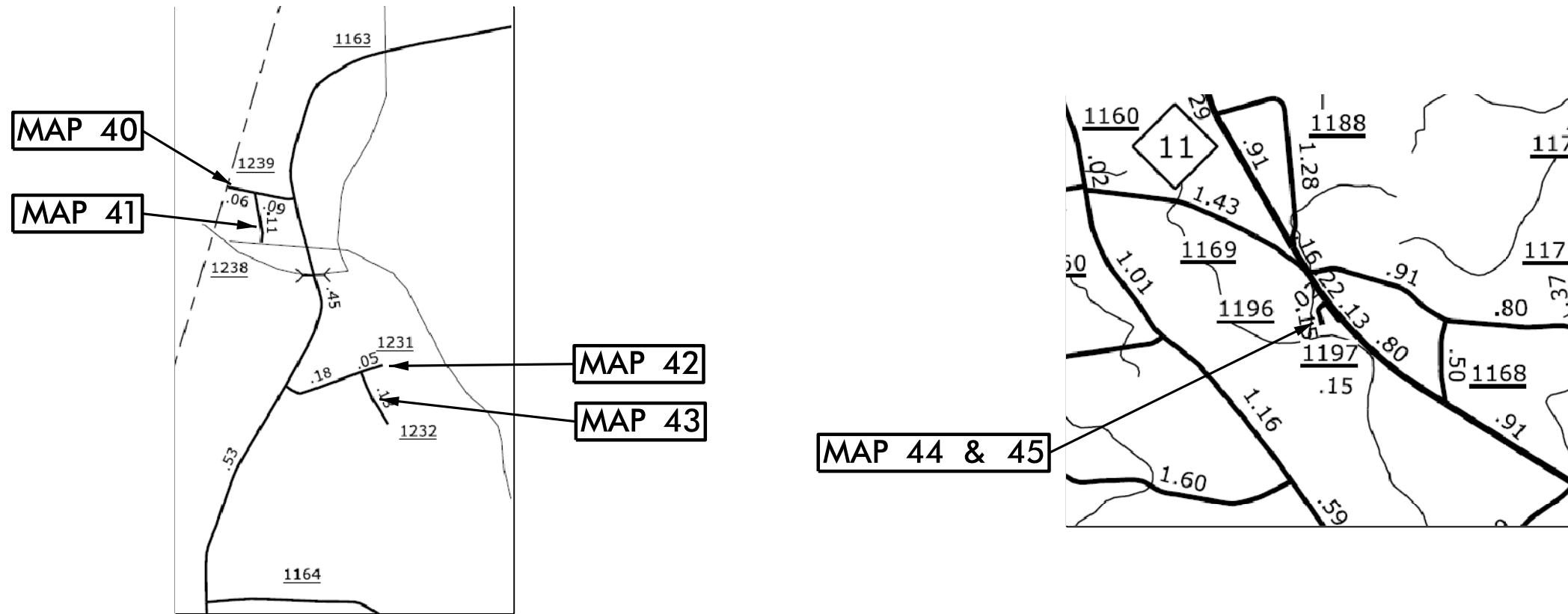
CONTRACT NO.: DA00302 WBS ELEMENT: 2017CPT.01.03.20082.1, ETC.

STATE OF NORTH CAROLINA
DIVISION OF HIGHWAYS

HERTFORD COUNTY

| | | | |
|-----------------------|-----------------------------|-------------|--------------|
| STATE | STATE PROJECT REFERENCE NO. | SHEET NO. | TOTAL SHEETS |
| N.C. | 2017CPT.01.03.20082.1, ETC. | 4 | |
| STATE PROJ. NO. | F.A. PROJ. NO. | DESCRIPTION | |
| 2017CPT.01.03.20462.1 | | MAP 40 - 45 | |
| | | | |
| | | | |

LOCATION: MAP 40 SR 1239 FROM SR 1163 TO NORTHAMPTON CO. LINE
 MAP 41 SR 1238 FROM SR 1239 TO CUL DE SAC
 MAP 42 SR 1231 FROM SR 1163 TO END
 MAP 43 SR 1232 FROM SR 1231 TO END
 MAP 44 SR 1196 FROM NC 11 TO END
 MAP 45 SR 1197 FROM SR 1196 TO NC 11
 TYPE OF WORK: RESURFACING



NTS

PROJECT LENGTH

| | | |
|----------------------------------|---|----------|
| LENGTH OF ROADWAY PROJECT MAP 40 | = | 0.18 MI. |
| LENGTH OF ROADWAY PROJECT MAP 41 | = | 0.09 MI. |
| LENGTH OF ROADWAY PROJECT MAP 42 | = | 0.22 MI. |
| LENGTH OF ROADWAY PROJECT MAP 43 | = | 0.12 MI. |
| LENGTH OF ROADWAY PROJECT MAP 44 | = | 0.16 MI. |
| LENGTH OF ROADWAY PROJECT MAP 45 | = | 0.14 MI. |

Prepared in the Office of:
DIVISION OF HIGHWAYS
 113 Airport Dr., Edenton NC, 27932

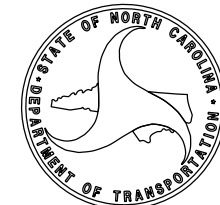
2012 STANDARD SPECIFICATIONS

LETTING DATE:

W.B. HOBBS, P.E.
 DIVISION PROJECT MANAGER

C.E. SLACHTA
 DIVISION PROPOSALS ENGINEER

DIVISION OF HIGHWAYS
STATE OF NORTH CAROLINA



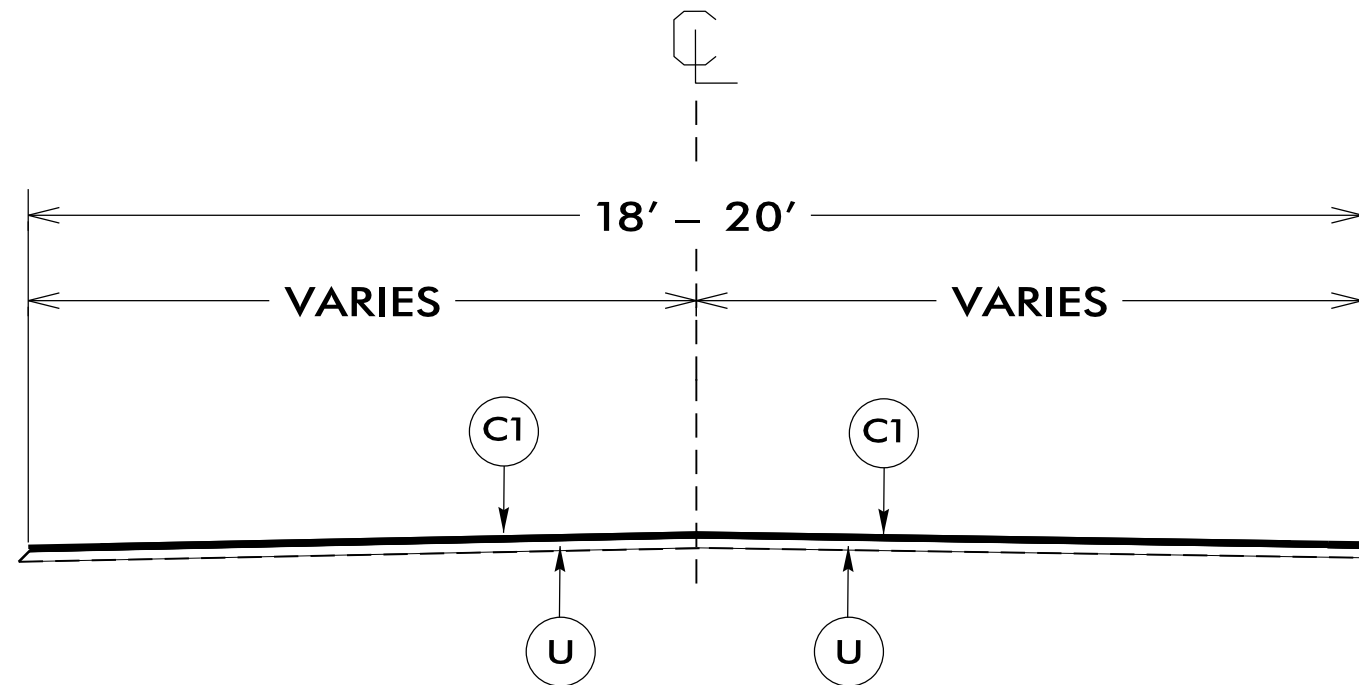
P A V E M E N T S C H E D U L E

| | |
|-----------|---|
| C1 | PROP. APPROX. 0.75" ASPHALT CONCRETE SURFACE COURSE, TYPE S4.75A, AT AN AVERAGE RATE OF 75 LBS. PER SQ. YD. |
| U | EXISTING PAVEMENT. |

| | |
|-----------------------------|-----------|
| PROJECT REFERENCE NO. | SHEET NO. |
| 2017CPT.01.03.20082.1, ETC. | 5 |

NOTES:

- *ALL PAVED S.R. ROADS TO BE RESURFACED TO THE ENDS OF THE RADII, OR AS DIRECTED BY THE ENGINEER
- *EDGES, PAVEMENT WIDENING, INTERSECTIONS, AND BRIDGE FLARES ARE INCLUDED IN THE SUMMARY OF QUANTITIES
- *PAVEMENT MARKINGS TO BE PERFORMED BY OTHERS
- *SHOULDER RECONSTRUCTION TO BE PERFORMED BY OTHERS



TYPICAL SECTION NO. 1

USE WITH MAPS 1 - 45

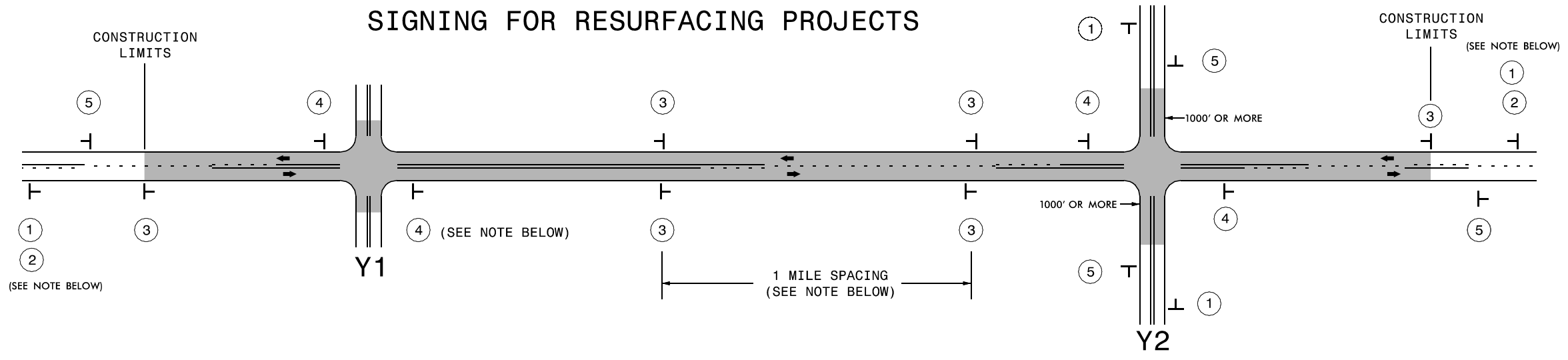
NTS

09-DEC-2016 10:16 C:\Users\Avesi\OneDrive\Documents\Projects\Division\PROJECT WORKING FILES\District Two\DA00302 Bertie & Hertford Co. ThinLift Overlays (2016-2017)\1\Pre-Bid Documents\Sht 1 - 5 DA00302 Plans.dgn

SUMMARY OF QUANTITIES

| WBS NO | COUNTY | MAP NO | ROUTE | DESCRIPTION | TYP NO | LANES | LANE TYPE | FINAL SURFACE TESTING REQUIRED | WARM MIX ASPHALT REQUIRED | LENGTH MI | WIDTH FT | MOBILIZATION LS | SURFACE COURSE, S4.75A TONS | ASPHALT BINDER FOR PLANT MIX TONS | ADJ. OF MANHOLES EA | ADJ. OF METER OR VALVE BOX EA | WORK ZONE ADVANCE/GENERAL WARNING SIGNING SF | TEMPORARY TRAFFIC CONTROL LS |
|-----------------------|----------|--------|---------|---------------------------------|--------|-------|-----------|--------------------------------|---------------------------|--------------|----------|-----------------|-----------------------------|-----------------------------------|---------------------|-------------------------------|--|------------------------------|
| 2017CPT.01.03.20082.1 | Bertie | 1 | SR 1251 | FROM ROXOBEL NCL TO END | 1 | 2 | 2WU | NO | NO | 0.20 | 18 | 1 | 82 | 6 | | | 32 | 1 |
| 2017CPT.01.03.20082.1 | Bertie | 2 | SR 1236 | FROM SR 1235 TO END | 1 | 2 | 2WU | NO | NO | 0.47 | 18 | * | 191 | 13 | | | 32 | * |
| 2017CPT.01.03.20082.1 | Bertie | 3 | SR 1325 | FROM SR 1002 TO END | 1 | 2 | 2WU | NO | NO | 0.28 | 18 | * | 115 | 8 | | | 32 | * |
| 2017CPT.01.03.20082.1 | Bertie | 4 | SR 1374 | FROM NC 45 TO SR 1375 | 1 | 2 | 2WU | NO | NO | 0.17 | 19 | * | 72 | 5 | 2 | | 32 | * |
| 2017CPT.01.03.20082.1 | Bertie | 5 | SR 1375 | FROM SR 1374 TO END | 1 | 2 | 2WU | NO | NO | 0.09 | 18 | * | 38 | 3 | 1 | | | * |
| 2017CPT.01.03.20082.1 | Bertie | 6 | SR 1378 | FROM SR 1336 TO END MAINT | 1 | 2 | 2WU | NO | NO | 0.54 | 19 | * | 232 | 16 | | | 32 | * |
| 2017CPT.01.03.20082.1 | Bertie | 7 | SR 1371 | FROM NC 45 TO END MAINT | 1 | 2 | 2WU | NO | NO | 0.79 | 18 | * | 325 | 23 | | | 32 | * |
| 2017CPT.01.03.20462.1 | Hertford | 8 | SR 1208 | FROM SR 1107 TO SR 1209 | 1 | 2 | 2WU | NO | NO | 0.06 | 18 | * | 23 | 2 | | | | * |
| 2017CPT.01.03.20462.1 | Hertford | 9 | SR 1209 | FROM SR 1208 TO SR 1208 | 1 | 2 | 2WU | NO | NO | 0.36 | 18.5 | * | 151 | 11 | | | 32 | * |
| 2017CPT.01.03.20462.1 | Hertford | 10 | SR 1107 | FROM NC 42 TO END MAINT | 1 | 2 | 2WU | NO | NO | 0.52 | 20 | * | 236 | 17 | | | 32 | * |
| 2017CPT.01.03.20462.1 | Hertford | 11 | SR 1242 | FROM SR 1105 TO SR 1243 | 1 | 2 | 2WU | NO | NO | 0.08 | 18 | * | 33 | 2 | | | 32 | * |
| 2017CPT.01.03.20462.1 | Hertford | 12 | SR 1243 | FROM SR 1242 TO CUL DE SAC | 1 | 2 | 2WU | NO | NO | 0.29 | 18 | * | 130 | 9 | | | | * |
| 2017CPT.01.03.20462.1 | Hertford | 13 | SR 1187 | FROM NC 42 TO END | 1 | 2 | 2WU | NO | NO | 0.32 | 20 | * | 146 | 10 | | | 32 | * |
| 2017CPT.01.03.20462.1 | Hertford | 14 | SR 1224 | FROM SR 1187 TO END | 1 | 2 | 2WU | NO | NO | 0.20 | 18 | * | 87 | 6 | | | - | * |
| 2017CPT.01.03.20462.1 | Hertford | 15 | SR 1210 | FROM SR 11 TO END | 1 | 2 | 2WU | NO | NO | 0.29 | 18 | * | 119 | 8 | | | 32 | * |
| 2017CPT.01.03.20462.1 | Hertford | 16 | SR 1184 | FROM NC 11 BUS TO END | 1 | 2 | 2WU | NO | NO | 0.45 | 18 | * | 184 | 13 | | | 32 | * |
| 2017CPT.01.03.20462.1 | Hertford | 17 | SR 1240 | FROM SR 1184 TO SR 1184 | 1 | 2 | 2WU | NO | NO | 0.21 | 18 | * | 84 | 6 | 1 | 1 | | * |
| 2017CPT.01.03.20462.1 | Hertford | 18 | SR 1227 | FROM SR 1184 TO SR 1192 | 1 | 2 | 2WU | NO | NO | 0.05 | 20 | * | 31 | 2 | | | | * |
| 2017CPT.01.03.20462.1 | Hertford | 19 | SR 1192 | FROM NC 11 BUS TO CUL DE SAC | 1 | 2 | 2WU | NO | NO | 0.39 | 20 | * | 183 | 13 | | | 32 | * |
| 2017CPT.01.03.20462.1 | Hertford | 20 | SR 1198 | FROM NC 561 TO END | 1 | 2 | 2WU | NO | NO | 0.16 | 20 | * | 70 | 5 | | | 32 | * |
| 2017CPT.01.03.20462.1 | Hertford | 21 | SR 1222 | FROM SR 1108 TO SR 1229 | 1 | 2 | 2WU | NO | NO | 0.28 | 18 | * | 114 | 8 | | | 32 | * |
| 2017CPT.01.03.20462.1 | Hertford | 22 | SR 1229 | FROM SR 1108 TO SR 1222 | 1 | 2 | 2WU | NO | NO | 0.29 | 20 | * | 130 | 9 | | | 32 | * |
| 2017CPT.01.03.20462.1 | Hertford | 23 | SR 1226 | FROM SR 1229 TO END | 1 | 2 | 2WU | NO | NO | 0.24 | 18 | * | 111 | 8 | | | | * |
| 2017CPT.01.03.20462.1 | Hertford | 24 | SR 1410 | FROM SR 1411 TO END | 1 | 2 | 2WU | NO | NO | 0.28 | 18 | * | 116 | 8 | | | 32 | * |
| 2017CPT.01.03.20462.1 | Hertford | 25 | SR 1450 | FROM SR 1460 TO SR 1460 | 1 | 2 | 2WU | NO | NO | 0.16 | 18 | * | 64 | 4 | | | 32 | * |
| 2017CPT.01.03.20462.1 | Hertford | 26 | SR 1460 | FROM SR 1450 TO END | 1 | 2 | 2WU | NO | NO | 0.20 | 18 | * | 82 | 6 | | | | * |
| 2017CPT.01.03.20462.1 | Hertford | 27 | SR 1414 | FROM NC 461 TO END MAINT | 1 | 2 | 2WU | NO | NO | 0.68 | 19 | * | 295 | 21 | | | 32 | * |
| 2017CPT.01.03.20462.1 | Hertford | 28 | SR 1402 | FROM SR 1400 TO END MAINT | 1 | 2 | 2WU | NO | NO | 0.80 | 18 | * | 327 | 23 | | | 32 | * |
| 2017CPT.01.03.20462.1 | Hertford | 29 | SR 1401 | FROM SR 1400 TO END | 1 | 2 | 2WU | NO | NO | 0.59 | 19 | * | 256 | 18 | | | 32 | * |
| 2017CPT.01.03.20462.1 | Hertford | 30 | SR 1449 | FROM SR 1401 TO NC 45 | 1 | 2 | 2WU | NO | NO | 0.37 | 18 | * | 151 | 11 | | | 32 | * |
| 2017CPT.01.03.20462.1 | Hertford | 31 | SR 1341 | FROM SR 1303 TO END | 1 | 2 | 2WU | NO | NO | 0.50 | 20 | * | 234 | 16 | | | 32 | * |
| 2017CPT.01.03.20462.1 | Hertford | 32 | SR 1170 | FROM SR 1160 TO END MAINT | 1 | 2 | 2WU | NO | NO | 0.11 | 18 | * | 47 | 3 | 1 | | 32 | * |
| 2017CPT.01.03.20462.1 | Hertford | 33 | SR 1235 | FROM SR 1157 TO CUL DE SAC | 1 | 2 | 2WU | NO | NO | 0.26 | 20 | * | 125 | 9 | | 1 | 32 | * |
| 2017CPT.01.03.20462.1 | Hertford | 34 | SR 1234 | FROM DEAD END TO CUL DE SAC | 1 | 2 | 2WU | NO | NO | 0.38 | 20 | * | 181 | 13 | | | 32 | * |
| 2017CPT.01.03.20462.1 | Hertford | 35 | SR 1236 | FROM SR 1157 TO END | 1 | 2 | 2WU | NO | NO | 0.34 | 20 | * | 153 | 11 | | | 32 | * |
| 2017CPT.01.03.20462.1 | Hertford | 36 | SR 1237 | FROM SR 1236 TO END | 1 | 2 | 2WU | NO | NO | 0.23 | 20 | * | 105 | 7 | | | 32 | * |
| 2017CPT.01.03.20462.1 | Hertford | 37 | SR 1177 | FROM US 158 BUS TO END | 1 | 2 | 2WU | NO | NO | 0.17 | 20 | * | 75 | 5 | | | 32 | * |
| 2017CPT.01.03.20462.1 | Hertford | 38 | SR 1206 | FROM SR 1177 TO SR 1207 | 1 | 2 | 2WU | NO | NO | 0.05 | 18 | * | 21 | 1 | | | | * |
| 2017CPT.01.03.20462.1 | Hertford | 39 | SR 1207 | FROM SR 1206 TO END | 1 | 2 | 2WU | NO | NO | 0.10 | 18 | * | 41 | 3 | | | | * |
| 2017CPT.01.03.20462.1 | Hertford | 40 | SR 1239 | FROM SR 1163 TO NORTHAMPTON CO. | 1 | 2 | 2WU | NO | NO | 0.18 | 18 | * | 74 | 5 | | | 32 | * |
| 2017CPT.01.03.20462.1 | Hertford | 41 | SR 1238 | FROM SR 1239 TO CUL DE SAC | 1 | 2 | 2WU | NO | NO | 0.09 | 18 | * | 47 | 3 | | | | * |
| 2017CPT.01.03.20462.1 | Hertford | 42 | SR 1231 | FROM SR 1163 TO END | 1 | 2 | 2WU | NO | NO | 0.22 | 19 | * | 109 | 8 | | | 32 | * |
| 2017CPT.01.03.20462.1 | Hertford | 43 | SR 1232 | FROM SR 1231 TO END | 1 | 2 | 2WU | NO | NO | 0.12 | 19 | * | 65 | 5 | | | | * |
| 2017CPT.01.03.20462.1 | Hertford | 44 | SR 1196 | FROM NC 11 TO END | 1 | 2 | 2WU | NO | NO | 0.16 | 20 | * | 71 | 5 | | | 32 | * |
| 2017CPT.01.03.20462.1 | Hertford | 45 | SR 1197 | FROM SR 1196 TO NC 11 | 1 | 2 | 2WU | NO | NO | 0.14 | 20 | * | 63 | 4 | | | 32 | * |
| TOTAL | | | | | | | | | | 12.82 | - | 1 | 5,589 | 392 | 5 | 2 | 1,056 | 1 |

SIGNING FOR RESURFACING PROJECTS



| LEGEND | |
|--------|---------------------------|
| ┃ | STATIONARY SIGN |
| ← | DIRECTION OF TRAFFIC FLOW |

MAINLINE (-L-) SIGNING

-Y- LINE SIGNING

| SIGNING NOTES AND PLACEMENT PER DIRECTION | ① | <p>PLACE 1000' PRIOR TO BEGINNING OF CONSTRUCTION LIMITS. ONLY USED ON -Y- LINES IF RESURFACING LIMITS EXTEND 1000' ALONG -Y- LINE.</p> <p>#2 SIGN ONLY USED WHEN RESURFACING LIMITS ARE 2 OR MORE MILES IN LENGTH. ROUND UP TO NEXT WHOLE NUMBER. (NO FRACTIONAL OR DECIMAL NUMBERS)</p> | NO REQUIRED STATIONARY SIGNING FOR THE FOLLOWING -Y- LINE CONDITIONS: | | |
|---|---|--|---|---|--|
| | ② | | <ol style="list-style-type: none"> 1) LESS THAN 1000' OF RESURFACING ALONG -Y- LINE 2) SUBDIVISION ROADS 3) DEAD END ROADS | <p>WHEN PAVING/CONSTRUCTION ACTIVITIES PROCEED ACROSS AN UNSIGNED -Y- LINE, ADVANCE WARNING PORTABLE SIGNS SHALL BE USED ALONG THE -Y- LINE AS SHOWN BELOW. REMOVE UPON COMPLETION OF WORK.</p> <div style="display: flex; justify-content: space-around;"> </div> <p>PLACED 500' IN ADVANCE OF FLAGGER. PLACED 250' IN ADVANCE OF FLAGGER.</p> | |
| | ③ | <p>PLACE INITIALLY AT THE CONSTRUCTION LIMITS AND SPACED 1 MILE APART THEREAFTER. IF NO -Y- LINES EXIST, PLACE 2ND SET 1/2 MILE FROM THE CONSTRUCTION LIMITS AND THEN SPACE 1 MILE THEREAFTER.</p> | | | |
| | ④ | <p>THESE ARE FOR -Y- LINES THAT ARE "THROUGH" ROADWAYS. DEAD END AND SUBDIVISION ROADS ARE NOT "THROUGH" ROADWAYS. INSTALL 500' +/- FROM EACH -Y- LINE APPROACH AS SHOWN ABOVE. FOR MULTIPLE -Y- LINES THAT ARE SEPARATED BY 0.25 MILES OR LESS, TREAT AS A SINGLE UNIT AND INSTALL WITHIN 500' OF EACH APPROACH. A MAXIMUM OF 2 SIGN SETS PER MILE. DO NOT INSTALL WHEN -Y- LINES ARE WITHIN 0.5 MILES FROM "END ROAD WORK" SIGN.</p> | | | |
| | ⑤ | <p>PLACE 500' FOLLOWING THE END OF CONSTRUCTION LIMITS.</p> | | | |

8/8/2013 S:\T\U\WZTC\Resurfacing\2013\Documents\New_Pr ocedures_05_09_2013\Resurfacing_AdvWarn_2Ln.dgn User:frmgarr.ett

**RESURFACING
ADVANCE WARNING SIGNS
FOR
RURAL AND SUBURBAN
2 LANE ROADWAYS**